

MONTHLY MEMBERSHIP PROGRESS REPORT

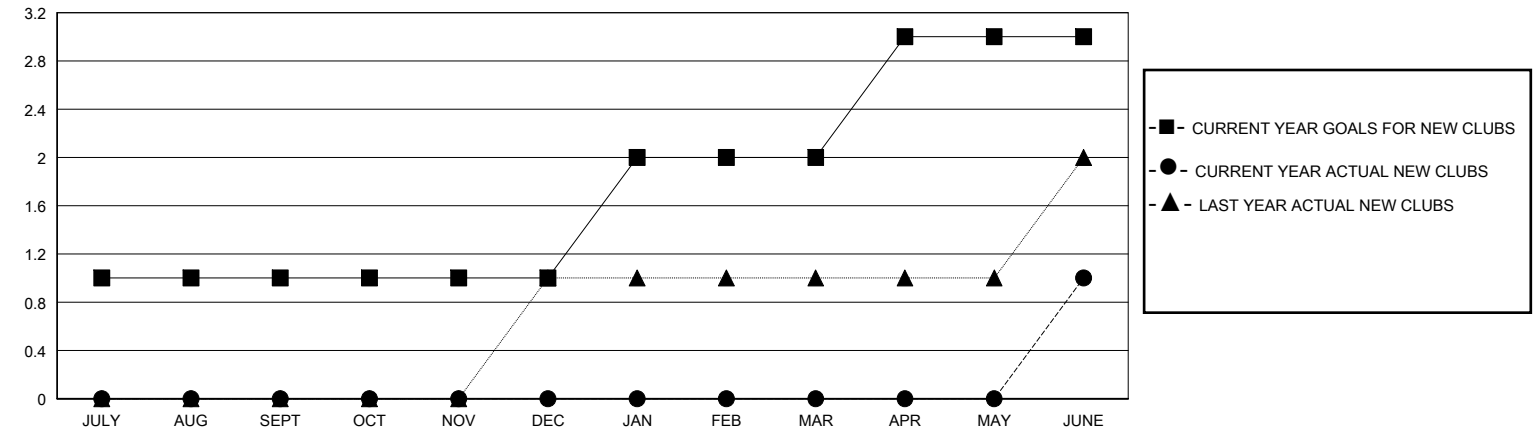
District 35 N

Results as of: 6/30/2025

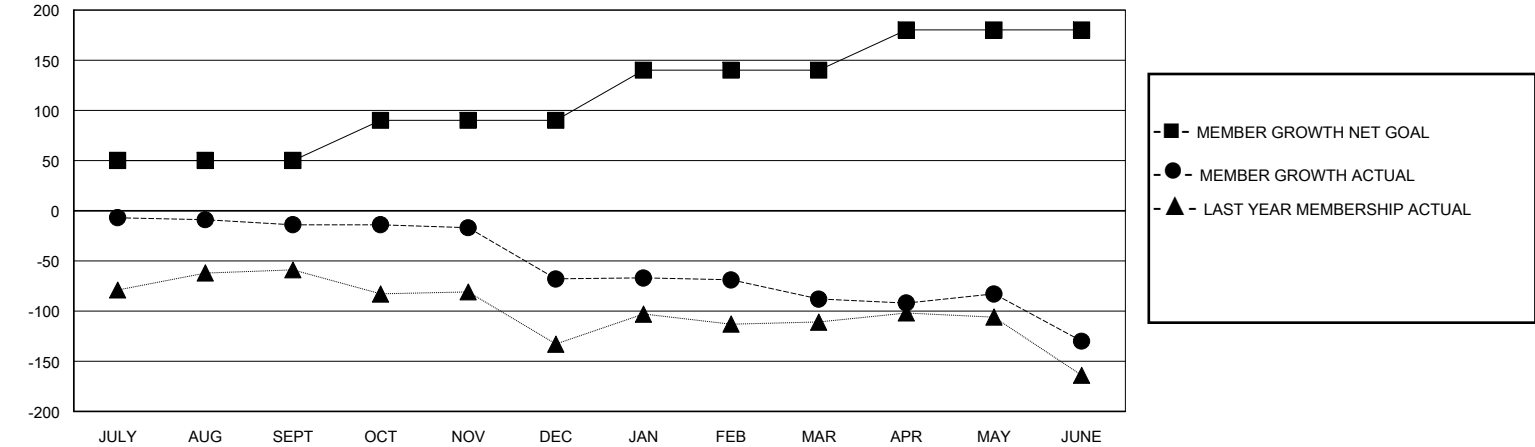
GMT: LOCATION FLORIDA GMT CA

| Clubs | | | | Members | | | |
|-----------------------|---------------|-----------|---------------|-----------------------|------------------------|----------------------|--|
| RESULTS FOR 2024-2025 | | | | RESULTS FOR 2024-2025 | | | |
| QUARTER | NEW CLUB GOAL | NEW CLUBS | DROPPED CLUBS | QUARTER | MEMBER GROWTH NET GOAL | MEMBER GROWTH ACTUAL | DROPPED MEMBERS ACTUAL (including transfers) |
| JULY/AUG/SEPT | 1 | 0 | 0 | JULY/AUG/SEPT | 50 | 31 | 39 |
| OCT/NOV/DEC | 0 | 0 | 2 | OCT/NOV/DEC | 40 | 48 | 85 |
| JAN/FEB/MAR | 1 | 0 | 2 | JAN/FEB/MAR | 50 | 42 | 54 |
| APR/MAY/JUNE | 1 | 1 | 0 | APR/MAY/JUNE | 40 | 90 | 89 |

GOALS AND ACTUAL NEW CLUBS CUMULATIVE



GOALS AND ACTUAL MEMBERS CUMULATIVE



| | | |
|---|---|--|
| DROPPED CLUBS: 4 | 32 CLUBS OF 53 ADDED 1 OR MORE NEW MEMBERS | <u>GENDER DISTRIBUTION</u> MALE 556 (50.23%) FEMALE 549 (49.59%) |
| <u>DROPPED MEMBERS</u> DECEASED 7 CLUB CANCELLED 52 OTHER 208 TOTAL 267 | CLICK HERE FOR CUMULATIVE MEMBERSHIP DATA | TOTAL FAMILY UNIT MEMBERS 179 FAMILY MEMBERS PAYING HALF DUES 94 |